



## President's Message Happy Valentines Day

It was good to see all our new and old members at the last General meeting. And, also at the last Roundup meeting. The next meetings will be on February 10th and 24th.

Just a reminder that the Roundup is just around the corner. We will need help from ALL of YOU.

We will be selling Raffle tickets at Peppers Market on Saturday the 24th from 9 until 2 p.m. Also, we will need people to help with going around to the different businesses to collect donations for door prizes. Please let Marilyn know if you can help with either of these.

On Monday, March 4th at 8 a.m. we will begin setting up for the Roundup. There will be sign-in sheets on the stage each day. There will be something for everyone to do. For those that can't do heavy work, there are set down jobs in the Bldg. 2 restaurant area beginning at 9 a.m. Also needed are sweeping floors and cleaning restrooms.

There will be coffee and donuts for break at 10:30 in Bldg. 2.

Tuesday, we'll finish anything left from Monday's set up.

Friday evening will be the Silent Auction beginning at 6:30 p.m. We will start setting up for this at 5 p.m. right after the Show closes. We will set up chairs and 20 tables and place the items on the tables. There will be pizza served for those who help with set-up and work the Auction.

Saturday night at 7 p.m. will be the Live auction. Help is also needed to set up and work it as well.

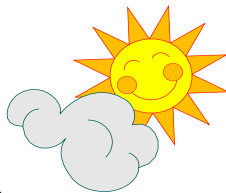
Oh yeah, enjoy the show - have lots of fun with all the above.

*See you there, Kaye*

**The Shop will be closed for Roundup  
From February 26th thru March 17th  
Re-opens on Monday March 18th**

## Sunshine Greetings

If you know of someone who could use a little sunshine greeting, please call Pauline Ott at 979-618-3432



**Be sure to attend the last  
Roundup Meeting  
on February 24th  
At 10 a.m.**

**We need your help  
to make this a great show**



## ROUNDUP BRIEFING

For the benefit of our newer members, here is a brief description of what goes on and what it takes to put our show on each year.

We start setting up on Monday (this year it's the 4th) about 8 a.m. Tables, display cases, equipment, and other supplies, must be moved from storage and set up. The buildings need to be swept out and the outside and inside vendor spaces marked.

Tuesday (the 5th) we will finish whatever tasks still need doing.

On both days coffee and donuts are provided for the morning break, around 10:30 a.m. Lunch is on your own. It's important that you sign the worker's sheet (at the stage) so you get credit for your help.

This year, Larry Baros will ramrod the general set up crew, Shirley Barter the outside dealer spaces, and Rose Baros Townsend inside dealer spaces. There are tasks for everyone; some that can be done while sitting and not involving manual labor, and even running errands (we always forget to bring something).

Wednesday is the day the dealers arrive and start setting up their booths.

**Thursday through Sunday is Show Time!** Many tasks need your help during the show: Membership/information table, spinning wheel, geode cutting, bucket brigade (to pick up auction donations from the dealers), helping with silent and live auctions, and many other things that may come up.

The Roundup ends Sunday at 5 p.m. and the dealers pack up and depart. Monday, following the show we take a day of rest and catch up at home. On Tuesday, starting about 8 a.m., we tear it all down and put everything away ready to go again next year.

The Rockhound Roundup is the Club's main source of income. It takes contributions of time and effort from ALL club members to make it work. So mark your calendars, plan your schedules, bring your gloves, and come on out.

*Thanking you in advance, Marilyn*

## NEED TAIL GUNNERS

for Roundup Field trips. Will receive compensation.  
Contact John Robbins 915-309-1891 to sign up





## Happy February Birthdays

Frank Barber, Kate Beachum,  
Rose Baros Townsend, Kendall  
Clark, Stephanie Wurdinger,  
Joe DeHoyos, Jesse Martinez,  
John Robbins, and Marilyn Page

## General Meeting — January 24, 2024

The meeting was called to order at 1:00pm, followed by the Pledge of Allegiance

The minutes were accepted as printed in the Chips Bulletin.

16 members attended the meeting and 1 guest.

Treasures Report: Bills paid to date.

Roundup: Next meeting Sat. Feb. 10 at 10 am.

Shop: Larry reported everything up and running in the shop.

Claims: James reported crew found a site to dig for Roundup. James motioned for Marilyn to send Joe Navaro a retiring card, Diane 2<sup>nd</sup>, motion passed.

Bulletin: Any information to be put in bulletin contact Carolyn.

Field Trips: Looking for a leader.

Membership: Kaye reported 93 members paid to date.

Property: Larry reported yard all clean and shed was cleaned for new oil coming in.

Library: Dave has the library open and members can check out books during the meetings.

Sunshine: Any member needs a card contact Pauline.

Old Business: Silversmithing classes on hold till further notice.

New Business: Nominating committee Dave, Larry and Marilyn nominated President- Rose Townsend and Kaye Green. Vice President -Dave Bleicher, Secretary -Carolyn Abbey, Treasure-Maria Costa, Roundup Chair -Marilyn Page, Shop Chair -Larry Baros, Bulletin Editor -Jerry Abbey, Claims - James Brown, 3yr Director -Jim Paddock, 2yr Director - Darlene Bleicher, 1yr Director -Kathy Townsend.

Rose Townsend Reported on speaking to the County Commissioners meeting, City Council meeting and the Rotary Club on behalf of the club against the proposed Luna County Mimbres Peaks National Monuments.

A motion to adjourn was made, second, passed

Meeting adjourned at 1:58

Submitted by Rose Townsend, DGMS Secretary



## Happy Anniversary

Shreeta Acharya  
& Tom Boyle,  
Kyle & Ellie  
Smith

## Board Meeting – February 7, 2024

The meeting was called to order at 1:12 pm, followed by the Pledge of Allegiance

6 Members in attendance.

Secretary: The minutes were accepted as printed in the Bulletin.

Roundup: Meetings 2/10th & 2/24th @ 10am. Marilyn needs help with donations, pick up last week Feb. Will be selling raffle tickets at Peppers. New Roundup T-Shirt \$12 & \$15 and old T-Shirt \$10 will be sold at the Show.

Bulletin: Carolyn showed the Design for new our 4' x 8' sign.

Claims: Kevin Myers going to claim on Thur. 2/8 @ 3:30 pm.

Shop: All set for the show. Saw blades and rubbers from last year budget. Larry brought up buying new trim saw and flat lap, Rose motion, Kathy second, motion passed. Larry looking into cost to extend saw room size to end of the cement.

Membership: Kaye announced that 98 are currently paid.

Property: Art cleaned cabinets, doors, desk and light system.

Old Business: Rose reported on talking at the different Mimbres Peak Monument meetings, letting them know DGMS is AGAINST them.

New Business: Kathy going to mine cleanup meeting,

Meeting adjourned at 2:00.

Submitted by Rose Townsend, DGMS Secretary



**Dues are PAST Due**  
**Renew Now!**

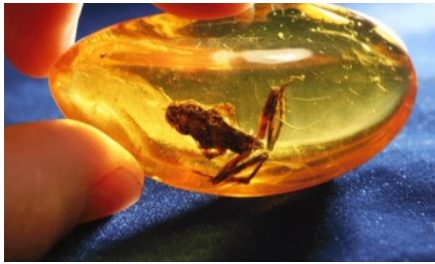
Ever notice, the older we get,  
the more we're like computers ?



We start out with lots of  
MEMORY and DRIVE  
then we become outdated,  
and eventually have to get  
our parts replaced...:)

## Identifying Natural versus Fake Amber

Amber, a form of petrified tree sap, is a fairly common gemstone but its high value also means a vast market for fakes. If you like the golden stuff, then you need to be able to tell the difference when you get your hands on some.



The worth of some orange resin is far less than the real deal.

### How Much of Amber Sold is Fake?

It's hard to say how much of it is fake, and it really depends on what kind of specimen you're chasing down.

A fist sized chunk with a fully formed scorpion inside? Probably fake, unless you're paying in the low five figures. A pea sized bit with a fruitfly and a couple bits of flora? Not really worth it to fake but not worth much more than \$40-50 in the first place.

As a general rule, the majority of faked amber is simply resin with some kind of critter thrown in it. Other times they'll have pieces of flora, almost always complete flowers or leaves which are very rare in the real stuff. Some of the less detectable fakes will have bits of plant matter in with the "centerpiece" as well.

### How to Tell if Amber is Real or Fake Inclusions: Look at What's Inside

The first thing to do is take a look at what's inside the individual piece of amber if it has any inclusions.

**Vertebrates:** You're not going to find an "affordable" piece of amber with any type of vertebrate or large insect in it. There are hundreds of these fakes, ranging from a complete mantis to even lizards for less than \$500. **These are all fake, full stop!**

Real inclusions of amber with even fragments of vertebrates are going to be prohibitively expensive. Indeed, whole vertebrates are found so rarely that it's a headline event when it happens.

**Fact: Common techniques for fabricating inclusions involve carving out part of real amber and inserting fakes, or embedding organisms directly into copal or synthetic resins.**

**Invertebrates:** Mainly meaning various insects, are often found as inclusions. Fruit flies and ants are common enough that they don't demand an excessive price but larger arthropods can get pricey. In real amber, it's often only fragments of larger insects. Half a spider or a bit of an ancient mantis claw.

**The key here is to ask yourself if the deal is too good to be true.** Because if it seems that way, it generally is.

It's also unusual for larger pieces with included arthropods to be entirely free of plant matter inclusions.

That's not to say that people don't fake amber without creatures, they certainly do, but these cases are rare. It's a good idea to look through the rest of a merchant's stock to see if they have any other obviously fake items.

**Fact: Visual signs of fake inclusions include modern-looking insects, like tree frogs, vertebrates, well-preserved and splayed-out organisms, and air gaps around inclusions.**

### Amber's Physical Properties:

Amber is a weird "stone." There's no other way to put it. Most

of the things we associate with "real" rocks just aren't present.

So, you need to be prepared for something that feels decidedly un-rocklike when you get some.

Try running your thumbnail on it before any other testing. Manmade Copal will pass the hot pin test (see below), but will also indent or scratch with a fingernail and a bit of force.

***Copal:** a natural resin that is intermediate between fresh plant resin and fossilized amber.*

### The Hot Pin Test: Damaging but Definitive

The hot pin test is not ideal for all cases, but it'll quickly let you know if what you have is the real deal or not.

**The problem is that it will damage a small part of the bit of amber, so it's not ideal for finished pieces, small specimens, or carvings.** On larger bits, you can buff it out as long as you use a light touch.

Take a pin or needle and a pair of pliers, heat it to red hot over the stove, then touch it to the sample. Both resin and real amber will melt, but the difference is the smell. Amber is generally from coniferous trees, with a distinctive pine scent. If the fumes smell like pine then you've got a real piece on hand.

Resins and epoxies will have either a faintly foul smell or smell like burning plastic.

### Real Amber Floats in Saltwater:

**Buoyancy Reveals Authenticity** - A lot of amber from around the world is found on beaches rather than being dug from underground.

To achieve marine salinity, add roughly 35 grams of salt per liter of water. You can then see if the piece floats, or acts buoyant at all. If it just drops to the bottom, then it's likely a fake.

This test isn't definitive, some resins and plastics will float.

### Acetone Testing:

If you have some acetone, an easy test, put your amber on something absorbent, then paint the surface with acetone and wait a few moments.

Real amber won't be affected and remain with the same smooth surface. Most epoxies, resins, and copals will become sticky.

### Testing Amber With a UV Light

Another way to distinguish real amber from fakes is an ultraviolet light. When exposed to long-wave UV light in a darkened room, authentic amber will glow a neon blue or greenish color.

Plastics and most amber imitations don't display this bright fluorescent glow. They may fluoresce slightly or not at all. A bright blue/green glow usually signals authentic Baltic amber, however additional testing should be done in order to confirm.

### Lab Testing: Certification from Professionals

If you're purchasing expensive jewelry or exotic specimens with inclusions that range into the thousands of dollars just poking it with a hot pin and trying some acetone may not cut it. It is recommended you go to a professional and get it certified.

**Fact: With care and multiple authentication tests, fakes can be revealed by visual inspection, chemical properties, suspect inclusions and lab analysis. But high quality forgeries can still deceive.**

*Edited from The Rock Seeker (8/2023)*

# SCHEDULE OF EVENTS

## FEBRUARY

Tuesday, February 14th .....	<b>VALENTINES DAY</b>
Monday, February 19th .....	Presidents Day
Wednesday, February 28th .....	General Meeting ..... 1 p.m.
Saturday, February 24th .....	Last Roundup Meeting ..... 10 a.m.

## MARCH

No Board Meeting Due to Roundup

Monday, March 4th .....	Set up Rockhound Roundup ..... begin 8:30 a.m.
Wednesday, March 6th,.....	Roundup Dealers Arrive .....begin 8:00 a.m.
Thursday, March 7 – 10th .....	Rockhound Roundup .....9a.m. – 5p.m.
Tuesday, March 12th .....	Tear down Rockhound Roundup
Saturday, March 16th .....	Special Big Diggings trip for Roundup workers
Wednesday, March 27th .....	General meeting ..... 1 p.m.

**All meetings are held at the Clubhouse - 4200 Raymond Reed Blvd**

**Visitors and guests are welcome at membership meetings.**



*Valentine's Day... Not Like it Used to Be!*

**February 14th is Valentine's Day**



Although it is celebrated as a lovers' holiday today, with the giving of candy, flowers, or other gifts between couples in love, it originated in 5th century Rome as a tribute to St. Valentine, a Catholic bishop. For eight hundred years prior to the establishment of Valentine's Day, the Romans had practiced a pagan celebration in mid-February commemorating young men's rite of passage to the god Lupercus. The celebration featured a lottery in which young men would draw the names of teenage girls from a box.

The girl assigned to each young man in that manner would be his sexual companion during the remaining year.

In an effort to do away with the pagan festival, Pope Gelasius ordered a slight change in the lottery. Instead of the names of young women, the box would contain the names of saints. Both men and women were allowed to draw from the box, and the game was to emulate the ways of the saint they drew during the rest of the year. Needless to say, many of the young Roman men were not too pleased with the rule changes.

Instead of the pagan god Lupercus, the Church looked for a suitable patron saint of love to take his place. They found an appropriate choice in Valentine.

Although the lottery for women had been banned by the church, the mid-February holiday in commemoration of St. Valentine was still used by Roman men to seek the affection of women. It became tradition for the men to give the ones they admired handwritten messages of affection, containing Valentine's name.

The first Valentine card grew out of this practice. The first true Valentine card was sent in 1415 by Charles, Duke of Orleans, to his wife. He was imprisoned in the Tower of London at the time.

Cupid, another symbol of the holiday, became associated with it because he was the son of Venus, the Roman god of love and beauty. Cupid often appears on Valentine cards.

*Written by Jerry Wilson*

*Be nice to your kids. They'll choose your Nursing home.*



## THE DEMING GEM & MINERAL SOCIETY, INC.

4200 Raymond Reed Blvd., Deming, NM 88030

FOUNDED - JANUARY 1965

DUES ARE DUE & PAYABLE ON DECEMBER 1st EACH YEAR

Membership Dues: \$15.00 per person and \$25.00 per family

### THE OFFICIAL SHOW OF THE SOCIETY

Held every year on the second weekend in March  
(Thursday through Sunday) at the SW New Mexico  
State Fairgrounds in Deming.



#### OFFICERS

President .....	Kaye Green .....	575-545-3906
Vice President .....	Tom Rodrigues ....	575-494-3402
Secretary .....	Rose Baros .....	719-242-6460
Treasurer .....	Maria Costa .....	603-738-1921
Bulletin Editor.....	Carolyn Abbey .....	575-543-8916
Roundup Chair.....	Marilyn Page.....	575-544-9019
1 Yr. Director.....	Jim Paddock .....	575-494-8522
2 Yr. Director .....	Kathy Townsend ...	575-546-6982
3 Yr. Director .....	Diane Krause .....	719-371-4168
Claims .....	James Brown .....	575-494-8906
Shop .....	Al Krause .....	719-371-4168

**NEXT GENERAL MEETING**  
**1:00 p.m. - Wednesday, February 28th**

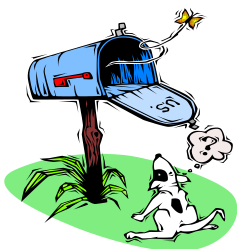
**BOARD MEETINGS**  
**1:00 p.m. - 1st Wednesday of month**

**LAST ROUNDUP MEETING**  
**Saturday February 24th — 10 a.m.**

**All meetings are held at the Deming Gem & Mineral Society, Inc. building**

4200 Raymond Reed Blvd., Deming, NM

*Visitors are invited and welcome at membership meetings.*



**Change your address, or phone or email address?**

***Please let us know!***

Send the changes to: DGMS Membership  
4200 Raymond Reed Blvd.  
Deming, NM 88030

“ROCK CHIPS” is the official bulletin of the Society

Email: [theDGMS@gmail.com](mailto:theDGMS@gmail.com)

**OFFICIAL WEB SITE** [www.thedgmsclub.com](http://www.thedgmsclub.com)

**THE DEMING GEM and MINERAL SOCIETY, INC.** *an incorporated, non-profit organization shall be dedicated to the knowledge, advancement and enjoyment of the earth sciences and associated subjects. The Society’s primary purpose is the dissemination and furtherance of knowledge of mineralogy, gem cutting and geology, and to stimulate interest in the development of these studies. It is composed of individuals who have chosen gems and the aforementioned studies as a major interest in their lives.*

HOME OF THE  
**ROCKHOUND  
ROUNDUP**



**ALMOST HERE**

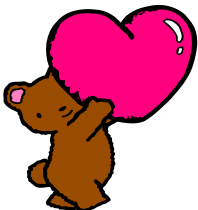
Deming Gem & Mineral Society's  
**59th Annual**

**ROCKHOUND  
ROUNDUP**

**Gem & Mineral Show**

**DON'T MISS IT!**

Deming Gem & Mineral Society  
Carolyn Abbey, Editor  
4200 Raymond Reed Blvd.  
Deming, New Mexico 88030



***Happy Valentines Day...***

