

The Deming Gem & Mineral Society, Inc.

ROCK CHIPS

VOLUME 54 NUMBER 10

OCTOBER 2022



President's Message

Happy Fall everyone.

It's perfect weather for Rockhounding and seeing the beautiful Sun rises and Sunsets.

Hopefully everyone will become involved in the upcoming November Craft Fair. Also, we are preparing for the Roundup in March.

We will be working every Wednesday morning from 9 til noon, at the clubhouse, filling bags and making items for the Spinning Wheel.

The Shop will be open every Wednesday and Friday from 9 til noon. We'll be having a work day on Saturday, October 22nd 10 a.m..

We need volunteers for refreshments for the General meeting on October 26th and also on November 16th at 1 p.m.

I am looking forward to seeing the Snow Birds soon.

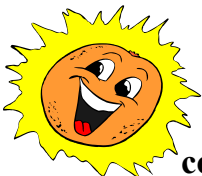
Thank you, Kaye



Our next Roundup meeting will be held on Sat. Oct 29th at 10 a.m. Please plan to attend.

Current Shop Hours

The current hours the Shop will be open are:
Wednesdays and Fridays 9 til noon.



Sunshine Greetings

If you know of someone who could use a little sunshine greeting, please call Louise Treanor at 575-575-0755.



**Halloween's a comin. . .
Watch for Trick or Treaters**

It's Time for Nominations for 2023 Club Officers.

The question is... Are you willing to work to make us a great club. . . Or do they write poems about you???
Or does this poem hit close to home?

NOMINATING COMMITTEE ON THE PROWL

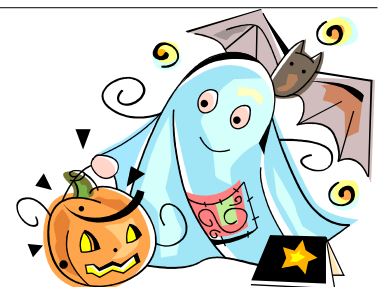
Who? Me? Run for office? No thanks!
The President's job . . . that should be Frank's
But, listen now, I've some suggestions to make.

How about a display case –
'twill only take a couple evenings for someone to make.

Program Chairman?
I don't see how I can manage that position just now.
But let's keep up the good speakers this year,
Maybe have a demonstration on cab making here?
You bet I'll attend every one, never fear.

Bulletin Editor?
Oh, I can't write a decent article – mine sound so trite.
But can't we have more rock cutting tips,
A column for news, and some humorous quips,
And something about our rock hunting trips.

Display table? I like it fine.
Oh, no, that Selenite isn't mine.
My minerals and gems are all packed away.
Anyway, I was much too tired today.
Don't you realize just how much rocks can weigh?
I'm in good standing. I've paid my dues.
I never fail to give you my views.
Meeting day comes and there I will be.
I'm present, please note, for all members to see.
Gee, don't you wish there were more members like ME?





Happy October Birthdays to:

Carolyn Abbey, Hank Boggs, Tom Bonewitz, James Brown, Marcia Foky, Brian Keeney, Leonard Holzinger, Virginia Mast, Jim Lemermeier, Janice Ramos, Martin Ridgway, Kathy Townsend, Becky Walkden, Martha Weaver, Daryl Johnson, Roger Pratt, Ava Spencer, Jean & Dennis Stanley, and Stan Wangberg.

Happy October Anniversaries to

Shirley Barter & Grant Stockdale, Dan & Kristi Brookshire, Mitch Johnson & Pam Pontzer, Richard & Cindy Humphries, Wayne & Annalee Long.



Happy Halloween



Multi-Holiday Craft & Gift Show

Hosted by Deming Gem & Mineral Society

November 12 & 13, 2022

Saturday 10:00 am - 5:00 pm

Sunday 10:00 am - 3:00 pm

SWNM State Fairgrounds

4300 Raymond Reed Blvd in Deming, NM

DGMS Board Meeting — October 5, 2022,

The meeting was called to order at 1 :05 pm by President Kaye Green, followed by the Pledge of Allegiance.

Membership: We had 8 people in attendance. There is a total 225 members now.

Upcoming meetings: Generals on Wed. October 26th and November 16th, at 1 pm. Board meeting on Wed. November 2nd.

Treasurer's Report: Bills are paid. It was voted on and approved to change our landline and internet to Century Link.

Minutes: August minutes were read and approved as published.

Claims: Tom Bonewitz is working on putting out DGMS signs on the Club's claim.

Shop: Al Krause, Shop Foreman, has returned and getting the saw repairs started. **The new shop schedule as of Nov. 1st** will be: Shop Monitors Marilyn Page on Mondays, Jim Paddock on Wednesdays, and Russell Scoggin on Fridays, each day 9-noon.

Craft Fair: Marilyn and Judy working on sending out applications for the show. We need Volunteers to help go around town and help put flyers out.

We ordered Turquoise colored T-shirts for the Craft Fair and Roundup that will be for sale.

Roundup: We will have a workday on **Sat., Oct. 22nd, 10 a.m.** We have lots of things to bag up for the cloth bags. We need help sewing bags please. We hope to have over 550 bags to use for sale and the spinning wheel.

PA system: Daryl Johnson is still researching a new wireless PA system.

Sunshine: If anyone knows of someone that could use a little sunshine please call Louise at 575-75-0755.

Refreshments: Please Sign up or bring something for the break at the General meeting on October 22nd, 1 p.m.

Field Trips: Oct.15th to Hatch for Rhyolite If you have other places you would like to go or if you would like to lead a trip, call Judy at 575-544-7453.

Christmas/Holiday Day Potluck Dinner on December 3rd at noon the Turkey & Ham will be furnished. BYOB, RSVP Marilyn Page 575-544-9019 by November 30th.

MISC: Judy Murphy asked to be able to order Beaver Tail pieces to help make Pendants with tumbled stones. It will be approx. \$50 dollars and ordered from Kingsley North. A motion made, seconded, and approved. We also voted and approved to order 10 boxes at \$4.48 per box of 1000 for 2x2 bags used to to put the tumbled stones in.

Judy also asked to be able to Order 50lbs. at \$5.00 lb of "AA" natural Mixture tumbled stones approx.1500 to 2000 per bag, from Western Woods in Utah. They will be used for the cloth bags, for Craft Fair, Roundup, Duck Races. The reason for ordering is that the stones will cost approx. 0.125 cents each or less and the Tumbling equipment needs repairs. A motion made, seconded, and approved.

A motion to adjourn was made, seconded, passed. Meeting adjourned at 2:05 pm.

Respectfully submitted, by Judy Murphy DGMS Secretary



SEPTEMBER 5th POTLUCK



Pic #1 is Kaye Green, Cyndi Phelan, Daryl & Donna Johnson.

Pic #2 is Diana Plummer

Pic #3 is Jim Paddock

Pic #4 is Lloyd Page, Roger Pratt, and Roger's grandson

Pic #5 is Marilyn Page and Roger Pratt

Pic #6 is Tom Gorse & Bea Gorse and Cyndi Phelan,

DGMS General Meeting - September 28th

The meeting was called to order at 1:05 pm, followed by the Pledge of Allegiance.

Secretary's report: Minutes were accepted and approved.

Membership: We had 13 people in attendance. There are 224 members to date. New member present: Kezia Rebeiz

Treasurer Report: All bills up to date. Issue with Verizon to be worked out.

Shop: Al & Russell will have the shop open on. Wed and Friday 9-12 for now. The saws were cleaned and oil changed.

Claims: Tom Bonewitz is working on putting out DGMS claim signs on the claim property to inform to people in the area.

Roundup: Marilyn and Judy are getting the flyers ready to go out. We need Volunteers to help put them out.

Craft Fair: Judy Murphy is working on getting in applications and organizing the booths.

Fair Board: Tom Rodrigues is our Representative to the Luna County Fair Board.

Duck Races: We would like to thank Tom Rodrigues for the nice space we were given this year for the show.

Sunshine: Anyone sick and need a card sent out?

Library: Lloyd Page will work on clearing up the books.

Refreshments: October 26th, Please bring some cake, cookies, etc. for the break during the meeting.

Field Trip: We are going to Mule Creek for Apache tears. Meet at the Club at 8 am and leave at 8:30 you would like to go to Call Judy Murphy 575-544-7453.

MISC: We Had 800 lbs. of very nice rock material donated from Anna Tol Hurst.

Thanksgiving meeting will be Wed. Nov. 16th, 1 p.m.

Christmas/Holiday Dinner is on Dec 3rd Saturday at noon. Turkey & Ham furnished, Please bring a dish to share, BYOB, RSVP to Marilyn Page 575-544-919 by Nov. 30th.

PA system: A new one is being researched by Daryl Johnson.

The 4-Wheeler: no one can use other than the Show. It is only insured for DGMS on the Fair Grounds between the 2 buildings.

FIELD TRIP ETHICS

1. You are part of a group and must do what is best for the group.
2. Sign the attendance sheet, it provides needed information in case of emergency.
3. If you arrive early, do not go out on your own, unless you clear it with the leader.
4. Don't expect to go to the collecting area until the appointed day.
5. Let your field trip leader know early if you need a ride to the collecting area.
6. If you need fuel or other supplies, inform the leader before leaving.
7. When caravanning, always be courteous when using your CB.
8. Respect the leaders knowledge of the area when they limit the caravan to certain types of vehicles.
9. When caravanning, always maintain adequate space between vehicles to accommodate passing vehicles.
10. Jeopardize no one by taking chances, such as climbing steep hills, going into mines, etc.
11. Stay with the group, do not go off on your own.
12. Let the leader know if you want to leave the group or camp.
13. Keep your pets and children under control. Clean up all pet doo doo.
14. Don't ever move another persons gear or material so you can dig, unless invited to share the diggings. Tools left in a digging mark another persons claim, even overnight.
15. Do not expect to share more material than you helped to dig.
16. Don't expect another to carry your rocks. If they offer, consider their load of material first.
17. Have a good time and enjoy your hobby.

FOR SALE: Dave Hodgatt has a Large Geode Cracker for sale. \$125.00. Please give him a call at 575-567-5592 if interested.

A motion to adjourn made, seconded, passed Meeting adjourned at 2.15 pm.

Respectfully submitted by Judy Murphy, DGMS Secretary

Whether it's royal or sky. . . blue stones

hold a special place in many of our hearts. They may be found in a variety of different gems, rocks, and minerals, ranging from little known Shattuckite, to some of the most famous gemstones of all time lapis lazuli and sapphire. Following is a list of some of the Blue Rocks and Minerals:

Apatite a soft but gorgeous gemstone, has been prized for some time. The stone itself is strange in that specimen and gem collectors may have different visions in their heads, one sees a deep, royal blue form in massive crystals and the other sees the electric blue-green of the Neon Apatite which is most often faceted.

Sodalite is a silica-based rock with deep blue coloration, sodalite is a fast favorite among those who collect and work with decorative stones. Often mixed with calcite, it forms a stone that resembles lapis lazuli.

Lapis Lazuli is the longest-running favorite blue stone, being found in ancient artifacts that are millennia-old. Highly prized among the ancient Egyptians as an inlay material, a precious stone even used as a dye or paint. It mainly hails from the Middle East. It's actually a rock rather than a pure mineral. It's a complex conglomerate of white calcite, combined with the ultramarine lazurite and flecks of pyrite in many cases. The whole stone is complex.

Topaz has undergone a shift in the last few decades. Previously, the stone was primarily known for clear and yellow-to-brown gemstones. Now the most common variety is blue topaz, which is a sky-to-deep blue gemstone with high clarity.

The reason comes from its treatment. Most topaz is clear or yellowish, until exposed to radiation.

This leaves you with a blue or brown stone, the brown stones can be further altered with heat leaving a cool blue color.

While not always natural, blue topaz is a low-priced stone suitable for rings and other fragile jewelry due to its superior hardness.

Turquoise has been known since antiquity, but its association is mainly with the American West and various Native American tribes who picked up silver-smithing. The uniquely southwestern look of jewelry often relies heavily on this simple stone.

It is a light-blue stone with a highly variable hardness. The stone ranges from chalky to very hard and solid, and the color ranges from different blue, cyan, and teal colors. It needs a little bit of know-how to purchase without risk since the stone is often altered or faked.

Kyanite is one of the weirder minerals out there. Its defining feature is that the hardness of the mineral varies depending on the angle you approach it compared to the angle of the crystal's growth. It's usually known as large, bladed crystals but it can also be found as small individual crystals of deep blue color. These latter crystals are columnar.

Kyanite's name draws from the Greek word for cyan, *kyanos*. Kyanite is also used as a gemstone on rare occasions. It's also used extensively in commercial chemical processes. Kyanite isn't just beautiful... it's an incredibly versatile mineral!



Sapphire is, without a doubt, the most famous of the blue gemstones. Sapphire's incredible hardness and deep beauty have made it a favorite for jewelry for much of human history.

Sapphire is usually cut into faceted gemstones, but less high-quality specimens are usually cut into cabochons.

Sapphires are found across the world, with some of the best even coming out of Montana.

Shattuckite is another of the various copper-bearing minerals that have earned a place in our collection of blue stones. This one primarily forms as soft crystals and in the place where it takes its name, the Shattuck Mine, it also forms pseudomorphs behind malachite.

Shattuckite is a strange mineral. It's hard to determine it through just normal properties due to the complex way it mixes with other stones. For instance, the majority of shattuckite has some amount of quartz included... which will really screw up your identification chances if you're performing a hardness test.

Chrysocolla is another of the blue-green copper minerals that can often be found in abundance. The name itself comes from the original use of ground Chrysocolla: as a soldering component for gold. The name translates roughly to "gold glue."

Chrysocolla is often used in place of turquoise in Southwestern-style jewelry. It's quite similar to turquoise overall but has a greener shade to it as a general rule.

It's found in abundance in many places, but a lot of it comes from the USA where usually found in old copper mines. This strange ore is another mineral that's both beautiful and of use chemically, making it a long time favorite among collectors.

Azurite A simple copper carbonate mineral, often associated with malachite. It actually hails from the same regions as lapis lazuli in many cases. It's been used as a pigment, cut into cabochons.

Azurite is a bit soft, and most of it is collected in a natural form. Other times it co-occurs with malachite, creating amazing gemstones whether they're cut and polished or just left as specimens. These mixtures are highly sought after in some circles, enough that fakes made with ground stone and resin is a concern for those interested in picking up some malachite-azurite.

Azurite is relatively rare, but it makes for striking specimens when found.

Dumortierite is a strange one. The crystals themselves formed into a few configurations, with the most attractive being long, blue needles. In this configuration, the needles are suspended in quartz, creating an interesting array of blue inclusions in the clear mineral.

Besides being found alone and in quartz, this stone is sometimes used in place of (or sold as) lapis or sodalite. It's quite hard, sitting at a solid 7 on the Moh's scale, and durable overall.

While not at the top of most people's lists, the unique forms of dumortierite make it a great mineral for collectors to find.





THE DEMING GEM & MINERAL SOCIETY, INC.

P.O. BOX 1459, DEMING, N.M. 88031
FOUNDED - JANUARY 1965

DUES ARE DUE & PAYABLE ON DECEMBER 1st EACH YEAR
Membership Dues: \$15.00 per person and \$25.00 per family

THE OFFICIAL SHOW OF THE SOCIETY

Held every year on the second weekend in March
(Thursday through Sunday) at the SW New Mexico
State Fairgrounds in Deming.



OFFICERS

- President Kaye Green575-545-3906
- Vice President Diane Krause.....719-371-4168
- Secretary Judy Murphy575-544-7453
- Treasurer Maria Costa 603-738-1921
- Bulletin Editor..... Carolyn Abbey 575-543-8916
- Roundup Chair Marilyn Page.....575-544-9019
- 1 Yr. Director..... Rose Baros719-242-6460
- 2 Yr. Director Jim Paddock575-494-8522
- 3 Yr. Director Kathy Townsend575-546-6982
- Claims Tom Bonewitz.....785-564-0316
- Shop..... Al Krause 719-371-4168

NEXT MEMBERSHIP MEETING
1:00 p.m. - Wednesday, October 26th

BOARD MEETINGS
1:00 p.m. - 1st Wednesday of month

NEXT ROUNDUP MEETING
OCTOBER 29th, 10 a.m.

All meetings are held at the Deming Gem & Mineral Society, Inc. building
4200 Raymond Reed Blvd., Deming, NM
Clubhouse phone: (575) 546-2554
Visitors are invited and welcome
at membership meetings.

“ROCK CHIPS” is the official bulletin of the Society

Email: thedgms@gmail.com

OFFICIAL WEB SITE www.thedgmsclub.com


THE DEMING GEM and MINERAL SOCIETY, INC.

an incorporated, non-profit organization shall be dedicated to the knowledge, advancement and enjoyment of the earth sciences and associated subjects. The Society's primary purpose is the dissemination and furtherance of knowledge of mineralogy, gem cutting and geology, and to stimulate interest in the development of these studies. It is composed of individuals who have chosen gems and the aforementioned studies as a major interest in their lives.



SCHEDULE OF EVENTS

OCTOBER

Saturday, October 15th	Hatch Field Trip for Rhyolite	8 a.m.
Saturday, October 22nd	Roundup work day	9 a.m. til noon
Wednesday, October 26th	General Meeting	1 p.m.
Saturday, October 29th	Roundup Meeting	10 a.m.
Monday, October 31st	 HALLOWEEN	

NOVEMBER

Wednesday, November 2nd	Board Meeting	1 p.m.
Saturday, November 5th	Rockhound Roundup meeting	1 p.m.
Sunday, November 6th	Daylight Saving Time Ends	
Sat. & Sun., Nov. 12th & 13th	Holiday Craft Fair	
Wednesday, November 16th.....	General Meeting	1 p.m.
Saturday, November 19th	Rockhound Roundup meeting	1 p.m.
Every Wednesday	Roundup work days	9 - noon

**All meetings are held at the Clubhouse (4200 Raymond Reed Blvd.)
Unless otherwise noted.**

Visitors and guests are welcome at membership meetings.

Deming Gem & Mineral Society
Carolyn Abbey, Editor
P.O. Box 1459
Deming, New Mexico 88031

