



Miz Prez 's message

Hi everybody !
WOW! I was astonished at the group that showed up to work on Monday to set up for the show. You were fantastic and filled in wherever you were needed. We, as the officers, appreciate all your co-operation. It was great working with a happy group. The show went very nicely, but we could have used a few more people to relieve those that ended up working all day.

Many thanks to the 2 gents that cut rocks for 4 straight days. A great job well done and we thank you. We had a good showing for the break-down on Tues. and we again thank all that helped us. We had a critique meeting in the afternoon and many items were addressed and will be considered. Thank you Delena for helping Georgia with the funds.

Lora Underwood, who is recovering from a fall and concussion wanted the workers to know that she grunted and complained all day Tues. so that all you had to do was work. Lora, is my mom and has helped out when she was here. She is 93 years young and hopes to see you all next fall.

Marilyn

Upcoming Field Trip

March 30th, there will be a field trip to Hatch. Because of the distance we will leave the club parking lot at 8:15am.

On April 20, Joe Bost will lead a field trip to Florite Ridge for Banded Sandstone. Bring your camera there is some nice scenery to see. Don't forget your water, snacks and a hat. You might get hungry.



Frank

Upcoming Classes

A wirewrapping class will be held on March 23rd.

On March 30th, Judy will be teaching us how to make an arrow bracelet.

Earrings Galore Class taught by Elaine Angstman will be held on April 6th from 9 until noon. Come and learn how to make up to three pair of earrings for \$5.00 and additional pairs for \$1.00 each. Both pierced and non-pierced. All materials provided, but if you have your own tools, feel free to bring them. Class size limited to 15 people.

Shirley

Shop Notes

Prices of Cerium Oxide 95% are rising. It comes from China. Besides being used as a polish it is used to make electronics.

Kingsley North rep. recommends trying Micro-Alumina polish 50-0037 (\$8.00 / lb. 5 lbs for \$34.00).

Micro-Alumina works good for tumblers and faceting. Try it out and let me know how it works for you.

Joe

Roundup... Lots of Thank Yous...

Maury and Judy wish to thank each and everyone who gave their time and energy to making this a great Roundup, and ask that everyone give their support to the new Roundup Chairs, Lyle Megli and Keith Meherg.

Thanks from Jerry to the folks who moved those panels on Feb. 13th. Cary Voss, Frank Barber, Frank Pulliam, Dave Hoggatt, Lyle Megli, Harry Lingenfelter, Joe Marone, Carlos Chavez, Maury Crawford.

Coffee & Donuts recap:

First off, special thank you to dealer/member Bruce Williams in Bldg. 1 who was there with his arms open each morning to carry donuts, soda or whatever was needed.

Then most important to all the volunteers. It seems like an easy job and it is but, there is the part about making more coffee and the ones that close have a little more work to do to set up for the next day and put stuff away. But nary a complaint was made.

Thank You MaryAnn Pulliam for your expert help in set up and tear down.

Also, thanks to Judy Crawford for trying to think ahead and help where she could even though her plate was overflowing. And, boy, thanks to those security people who turned on the coffee first thing. That helped a lot.

We had a great show, weatherwise and people. All I did was run to the store for more coffee, hot chocolate, and stuff, but it was moving. 92 dozen donuts, that was work, 14 dozen cookies were absorbed.

Have a cup of coffee!!!

Maureen Scepka Coffee & Donuts Chairperson

Thank yous from Carolyn to Brian Beringer too, for procuring the info and wonderful goodies for the Dealer's packets. Thank you too to First New Mexico Bank and Wells Fargo who were especially generous. Also thanks to all those who helped with the handwork on Monday, and to Georgia for coordinating the effort while I was busy with Inside Dealer booths.

Another special Club thank you to Lori & Kevin of Spanish Stirrup Rock Shop for donating 534 pounds of rock, some rough and some tumbled, for our club's use. It is very much appreciated.

Welcome Club Members

Kathie Snyder, Gary Halaburda, Lisa Brown, Nancy Hassell, Shirley Franklin, Stan Weaver, Clayton & Wanda Myers, Art & Barbara Dery, Al Spencer, Pat Estes, John Huesler, Terre Simons, Robert Young, Lynn Osterberg, William & Jeannine & Allysen Dodge, Jazlynn Eberling, Felicia Franco, Terry Barry, Jack & Cathy Maxwell, Rosalinda Vasquez, Cindy Jor-

THE DEMING GEM & MINERAL SOCIETY, INC.

P.O. BOX 1459, DEMING, N.M. 88031

FOUNDED - JANUARY 1965

DUES ARE DUE & PAYABLE ON DECEMBER 1st EACH YEAR

Membership Dues: \$12.00 per person for Adult Members
Junior Memberships: \$2.00 per person (up to 18 years of age)

All meetings are held at the Deming Gem & Mineral Society, Inc. building

4200 Raymond Reed Blvd., Deming, NM -- Clubhouse phone: 575- 546-2554

ROUNDUP MEETINGS

As Needed

BOARD MEETINGS

2:00 p.m.

1st Wednesday each month

MEMBERSHIP MEETINGS

2:00 p.m.

4th Thursday of each month

Visitors are invited and welcome at membership meetings.

OFFICERS

President.....	Marilyn Page	544-9019
Vice President.....	Shirley Krasinski	544-1315
Secretary	Jerry Abbey	543-8915
Treasurer	Georgia Hoggatt ...	309-678-7342
Bulletin Editor.....	Carolyn Abbey	543-8916
Roundup Chair ('13)...	Maurice Crawford	546-0056
Asst. Rnd.Up Chair ...	Keith Meherg	575-694-5747
Asst. Rnd.Up Chair	Lyle Megli	402-300-1061
1 Yr. Director.....	Frank Barber.....	546-0212
2 Yr. Director	George Laudermilk	520-403-1878
Past President.....	Frank Barber.....	546-0212
Pro Tem	Art Krasinski.....	575-494-5971

CHAIRPERSONS

Field Trip Chairs	Frank Barber	546-0212
	Joe Bost	546-9003
Shop	Joe Morone	937-206-2111
Claims	Maurice Crawford	546-0056
Librarian	Sandy Barber.....	546-0212
Membership.....	Elena Bost	546-9003
Parliamentarian
Photographer.....	All Club Members	
Sunshine	Barbara Hamilton.....	544-8643
Historian
Social Chairperson
Refreshments	All Club members	
Reporters.....	All Club Members	
Custodian	All Club Members	
Webmistress	Gaylene Fouch	546-5716

ROCKHOUND ROUNDUP

March 6 - 9, 2014



...OFFICIAL SHOW OF THE SOCIETY

Held every year on the second weekend (Thursday through Sunday) in March at the SW New Mexico State Fairgrounds.

The Society presents the Annual Gem & Mineral exhibition at the SWNM Fair toward the end of September. It is an official society function.

“ROCK CHIPS” is the official bulletin of the Society

Email: the DGMS@gmail.com

OFFICIAL WEB SITE www.dgms.bravehost.com

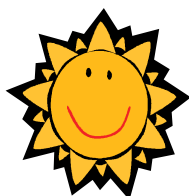
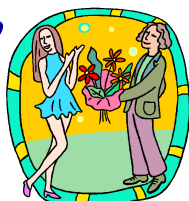
THE DEMING GEM and MINERAL SOCIETY, INC. *an incorporated, non-profit organization shall be dedicated to the knowledge, advancement and enjoyment of the earth sciences and associated subjects. The Society's primary purpose is the dissemination and furtherance of knowledge of mineralogy, gem cutting and geology, and to stimulate interest in the development of these studies. It is composed of individuals who have chosen gems and the aforementioned studies as a major interest in their lives.*



March Birthdays:

Monika Anderson, Ernie Bent, Ronnie Coon, Bud Daily, John Della-Ratta, Al Hemke, Lisa Jackson, Ron Kiely, Don McDonald, Kevin Nash, Lloyd Page, Maureen Scepk, Chris Moore, Richard Troxell, Al Wagner, & Armand Zahn,

Happy Anniversary to Terry & Tanya Barry, Ric & Linda Morgan-O'Connor, and Kim Muller & Sam Fry



Sunshine Greetings

The Al Lovell & Family for the loss of our member Florence, Elena Bost for the loss of her brother. Marian Binder for the loss of our member Bert. Get well cards were sent to Monika Anderson and Daryl Johnson.

If you know someone who needs a little sunshine call Barbara at 544-8643.

Shop Schedule

Monday, Friday & Saturday 9 a.m.—noon
 Wednesday, Noon until 3p.m.
 CLOSED Tuesday and Thursday

Claims

One to two people are needed to work with us this year to handle claims paperwork for the next year. See Maury or call him at 575-546-0056

The Knights of Columbus will again be having their annual Lenten Fish Fry March 1st. It will continue each Friday up to and including Good Friday March 29th.

The place:

Holy Family Hall, 615 S. Copper
 4 pm to 7 pm. Cost \$7.00 per person.

Includes fish, choice of potatoes (baked or french fries) Cole-slaw, biscuit and butter, coffee or ice tea.

This is open to everyone and carryout is available.



Rockhound State Park Happenings March 2013

Submitted by Rocky Rockhound

I hope everyone enjoyed the Rockhound Roundup. Ranger, Art Benavidez took 11 children and 9 adults on a tour of the park. They found their favorite rocks, and he identified them for the participants.

The campground has been overflowing this past month. We have the usual winter visitors plus those passing through. Our campground is a special place – large sites, beautiful sunsets, and lots of small animals and birds, including both Scaled and Gamble’s Quail.

Mark your calendars. Sally Allen, with the National Public Observatory will host a *Stars in Parks* program on Saturday, April 6th beginning at 8:40PM and ending at 10:10PM. You can look at stars and planets through high powered telescopes. Fees are waived for this event.

The Friends of Rockhound will be hosting the *Desert Alive and Native Plant Sale* on Saturday, April 13th, from 8:00 AM to noon. There will be a native plant walk, bird walk, silent auction, plus a wide selection of native plants for sale. Pre-sales plant orders will be taken at the Luna County Cooperative Extension Office at 210B Poplar St. on 3/14, 3/21, and 3/28 from 9-11 AM. The event is free and open to the public, so buy a plant, enjoy the event, and support your local state park.

Rockhound State Park is open every day. The Visitor Center is open from 10:00 A.M. to noon, and from 1:00P.M to 4:00 P.M. Spring Canyon is open Wednesday through Sunday from 8:00 A.M. to 3:30 P.M. Our telephone number is (575)546-6182.

FOR SALE

Woodward Ranch

3,000 acres with 60 varieties of agate and gemstone to hunt. RV sites, cabins, and tent camping
 Rock Shop stocked with rough rock, jewelry from all over the world.

Located in Alpine, Texas
 Inquiries: 432-364-2271
paradiseranch5@hotmail.com
www.woodwardranch.com

Deming Gem & Mineral Society March's Board Meeting Minutes – February 28, 2013

The meeting was called to order at 12:15 p.m., Present were: Marilyn Page, Dave & Georgia Hoggatt, Art & Shirley Krasinski, Frank Barber, Jerry & Carolyn Abbey, Lyle Megli, Maurice & Judy Crawford, and Ernie Bent.

Lunch was available to the Board (Pizza)

Committee Reports:

Secretary and Shop: No report

Treasurer: All accounts have a positive balance. A report is posted on the bulletin board.

President: Read us an article for the Headlight newspaper.

Judy read a letter from longtime member Carol Seebruch.

Shirley reported that she has set up the Club display at First Savings Bank. All who have seen it said "great job".

There was no old business.

New business: Jerry announced that he needs help at the Fairgrounds on Saturday, March 2nd at 9 a.m.

Marilyn announced a pot luck in April for departing Snowbirds. Details will be brought up at the general meeting.

Meeting adjourned at 1:15 p.m.

Respectfully submitted by Jerry Abbey, Secretary

DGMS, Inc. – General Meeting – February 28, 2013

The meeting was called to order at 2:05 p.m. by President Marilyn Page who then led the Pledge of Allegiance.

New members present: Roxanne Rager and Gary Halaburda.

The minutes were accepted as published in the Chips Bulletin.

Treasurer's report will be posted on the bulletin board. The taxes are in process with our accountant.

No Secretary's report.

President's report: Daryl Johnson was sent to the hospital, but was in the front row for this meeting. He does not recommend a ride in an ambulance.

An article was sent to the paper, and claims are taken care of.

Guests: There were 36 Deming High School Cheerleaders as our guests. They entertained us with several great school cheers. Visitors present were Rose & Dick Ostendorf from Wisconsin.

Shop: Nothing to report

Bulletin: It will be published after the Roundup. Get articles to

her by the day after Roundup.

Roundup: There are still positions to fill. We will also have a continuing silent auction. Advance sale of Tee shirts today, save \$2.00.

April 3rd we will have a pot luck for the Snowbirds. Georgia motioned, MaryAnn seconded, approved.

No old Business.

New business: Shirley people signing up for jobs at Roundup often put the wrong phone number down. Please be sure you put the right one on.

Break from 2:30—2:50 p.m.

50/50 was won by Keith Meherg, Name tag drawing for a mineral specimen was won by Carolyn Abbey; Door prize won by Debbie Rorick.

Adjourned at 3:10 p.m.

Respectfully submitted by

Jerry Abbey, Secretary



Bench Tips by Brad Smith

BEZEL SETTING PROBLEMS

When bezel setting a cab that has rather sharp corners, have you ever had problems pushing the metal down at the corners? It's a common problem often causing a wrinkle in your bezel and a grimace on your face.

In order for a bezel to capture the stone, the top edge of the bezel must be compressed and become shorter to lay down onto the stone. With a round or oval stone this naturally happens as you push and burnish the bezel. But when setting a stone with corners, the tendency is to push the long sides of the bezel down first. No compression occurs along the sides, and all excess metal is left at the corners. Compressing everything there is difficult. Often the only way to remove the extra metal at the corner is to make a saw cut and fold the two sides in to touch.

If you want a smooth bezel all around the corners, the simple solution is set the corners of the bezel first. Then push in and burnish the sides. In this way the necessary compression is distributed along the length of all sides and not forced to occur at the corners. With the corners set first, the top edge of the bezel can easily be compressed along the sides.

CHEAPER & BETTER PICKLE

Most jewelers use a granular pickle mixed with water. The active ingredient is sodium bisulfate. This can be purchased from local stores as a common pool chemical used for adjusting the acidity of the water. It's sold under various names, so be sure to check the list of active ingredients for a brand that is 95% or more sodium bisulfate.

An added benefit is that the pool chemical is more pure in form than what is sold for jewelry use and does not cause the often found brown grime floating on the top of a pickle pot.

MINERAL MYTHS AND MEANINGS and A LITTLE SCIENCE

From Dave Webster

Throughout the ages, man has held a deeper belief of gems and minerals, considering them to bring luck or associating them with health or life facts. When you think about it, there's probably a grain of truth to some of these myths because minerals, gems, and rocks are made up of the same compositions as the human body. If you've taken a chemistry class you'll know this to be true. This month is a little different. In researching some new myths about rocks and gems, I ran across the following article written by Ellen Steiber, a rock hound turned author who besides collecting, now writes about rocks! I thought her comments on the mythology of gems might provide an interesting perspective on the overall concept of gemstone mythology. Writes Ellen Steiber (www.ellensteiber.com), much of the traditional gem lore that has survived was passed down through treatises on precious stones called lapidaries.

According to Maria Leach's Standard Dictionary of Folklore, "Belief in the supernatural properties of precious stones goes back beyond recorded history. An early cuneiform tablet gives a list of stones facilitating conception and birth and inducing love and hate. These ideas of the ancients were woven into the astrological cosmos of the Babylonians, but the early Greek lapidaries were essentially medicinal.

The early Christian church opposed magic and condemned engraved talismans, but tolerated the use of medicinal amulets, and developed a symbolism of its own based on the gems of Exodus and the Apocalypse.

"Because they were part of the science of the [Middle Ages], rather than magic, [lapidaries] were accepted as fact ...It was not until the later part of the seventeenth century that some of the more incredible virtues of gems were seriously questioned by the authorities. Even then, there was no uniformity of opinion, and what one physician discarded as untenable, another vouched for in good faith from his own experience."

"To add to the confusion, when you consult early stone lore, i.e., the works of Pliny the Elder or biblical or even medieval mentions of gems, there's great debate over which stones the writers were really referring to. For example, it's now believed that "sapphire" is the English translation of the biblical "sapur," but what "sapur" actually referred to was not sapphire but lapis lazuli. Though the word emerald derives from the Latin "smaragdus," Pliny's "smaragdus" was not the word for emeralds but a term that encompassed many green stones.

Interestingly, though, one possible origin for the word topaz is Topazios, an island in the Red Sea, which in Pliny's time was famous for its peridot mines, and there's wide speculation that, straight through the eleventh century, topaz, peridot, and citrine were all referred to as topaz. In the 14th century, the word carbuncle was used to refer to garnets, rubies, and what might have been watermelon tourmaline. "There's another limitation you run up against when working with traditional lore, which is that often it only deals with the most commonly known precious and semiprecious gems.

Diamonds, rubies, sapphires, topaz, emeralds, pearls, turquoise,

carnelian, jade, amethyst, garnet, lapis lazuli, coral, agate, jasper, amber, quartz, and even malachite, are all stones with substantial, multicultural bodies of lore. But it's hard to find beliefs about minerals like Labradorite, Kyanite, or Rhyolite in the older sources; for those you have to go to contemporary writers, and then you're dealing with contemporary metaphysics which, though often drawing on ancient systems of belief, is another sort of language altogether.

"When I began writing about stones my approach was to research them and then find a way to use whichever bit of information intrigued me, but as writers work on books, their books work on them, and my fiction was working on me. I found that if I wrote about a stone, it helped to be able to hold it. Although this wasn't possible in the case of diamonds and the expensive jewels, I have a number of semiprecious gems and crystals (plus lots of "ordinary" rocks) on hand, and holding them led to working with them, trying to sense what might be inside them as my characters do. This process is still new to me. Quite honestly, sometimes I pick up a stone and don't feel a thing. But other times, whether through the senses, intuition, or imagination, the rocks and crystals have given me inspiration and information, hinted at what they hold inside them. "There came a point when I realized there was no one truth about any given stone, and that I was, in fact, free to write whatever I wanted about them. This doesn't mean I've stopped researching, gem lore, mythology, and mineralogy continue to fascinate me, or that I'm not careful about the qualities I ascribe to the stones in the novels. But I've come to believe that stones are as individual and unique as we are, and a great deal of what anyone perceives in a stone, beyond its geologic origins and specific mineralogical properties, is intuitive rather than definitive, and specific to the stone itself.

Source: *Golden Spike News*—3/13



New Sign For Your front Door

DUE TO THE PRICE INCREASE
ON AMMUNITION...
DO NOT EXPECT A
WARNING SHOT!

Thank you for your understanding

This is your LAST ISSUE OF THE BULLETIN
If we do not receive your dues by April 1st – Renew Now!

SCHEDULE OF EVENTS

MARCH

Saturday, March 16th	Big Diggins Roundup workers Field Trip	8 a.m.
Thursday, March 28th.....	General Meeting	2 p.m.
Saturday, March 30th	Field Trip to Hatch	8:15 a.m.
Saturday, March 30th	Class to make Arrow Bracelet	9 a.m.

APRIL

Wednesday, April 3rd	Board Meeting	2 p.m.
Saturday, April 6th	Earrings Galore class	9 a.m.
Saturday, April 20th	Field trip to Florida Ridge	TBA
Thursday, April 25th	General Meeting	2 p.m.

MAY

Wednesday, May 1st	Board Meeting	2 p.m.
Thursday, May 23rd	General Meeting	2 p.m.

All meetings are held at the Clubhouse (4200 Raymond Reed Blvd.) unless otherwise noted.
 Visitors and guests are welcome at membership meetings.

Deming Gem & Mineral Society
 Carolyn Abbey, Editor
 P.O. Box 1459

