



Miz Prez sez . . .

Whew! Another Roundup here & gone. That was some interesting weather. Hopefully, springtime in the desert will be a little less eventful for the rest of the season.

The snowbirds will be flying home soon and the Club will be slowing down for awhile. There's still plenty of activities so come on over and join in!

Sheila

Our Roundup field trips

to Big Diggins, Baker Egg Mine, Fluorite Ridge, and Rockhound State Park were well attended and fun was had by all in spite of the windy and cold weather. To our field trip leaders and anchors (Don & Maggie Bennett, Terry Huck, Frank Barber, Paul Browning, Jim Frederick, Ric & Linda Morgan-O'Connor, Ben & Barb Staff, Dave Hoggatt, Jim Foutch, and Art Benavidez) a very special thanks to a job well done! We couldn't have done it without you. Finally, thanks go out to folks who supported the field trips at the fairgrounds (Daryl Johnson, John Ewert, Barbara Hamilton, and Doris Miller). See photos of one of the Big Diggins field trips below.

Upcoming Field Trips

On Saturday, April 7th Maurice and Judy Crawford will lead us to some of the old mines near the Old Hachita townsite to collect moss agate, jasper, various copper ore specimens, and possibly some turquoise. Four-wheel drive vehicles are recommended. A hat, sunglasses, sunscreen, plenty of water are strongly recommended. Bring a lunch if you plan to stay past noon. Meet at the dirt parking lot in front of the Clubhouse at 8:00 AM, and leave promptly at 8:30 AM.

It is starting to get warm during the day now, and that means rattlesnakes are getting active. Please be aware of your surroundings – watch where you place your hands and feet!



In May Paul Browning will lead us to Rough & Ready Hills, West of Radium Springs to find agate, perlite, calcite crystals, and travertine. Date time to be determined.

Wayne

Roundup

We want to thank ALL of you who participated in running this year's Roundup show. The weather was a challenge, but "the show must go on". On that note, we want to express our appreciation for all of you who volunteered, members and non-members. ALL of you are the reason our show was a success and we got lots of compliments on how it was run. It is not our doing, IT IS YOURS.

We thank one and all for your hard work. We want to thank Jim & Darlene Hatley for being there to fill in wherever we needed help, and to Jerry & Carolyn for their support and advice. It made our job look easy. Thanks again.

Maurice & Judy

Upcoming Classes

On **Saturday, March 31**, there will be a wire wrapping class.

Elaine Angstrom will have the "Earrings Galore!" class on Saturday, **April 14th**, 9-12 a.m. Charge will be \$5 and all materials provided.

On Saturday, **April the 21st** there will be a sun catcher class.

For more information call Judy at 546-0056

Folks enjoying themselves and looking for "buried treasure"



Don & Maggie Bennett, our field trip leaders

DGMS, Inc. – General Meeting – February 23, 2012

The meeting was called to order by Vice Pres. Marilyn Page at 2:10 p.m. She then led the Pledge of Allegiance. Guests present were Marge Rohrer from Michigan Tech University and Paul & Toni Sanders from Illinois.

Marilyn asked for motion to approve minutes as printed in the Chips. Motion made by Daryl Johnson, seconded by all.

No Secretary's report.

Treasurer's report: Susan read her report. It will be posted on the bulletin board.

Committee Reports:

Field Trips: January trip to Baker Egg mine was attended by 60 people. Anyone wishing to go to Baker on their own must get approval from the Geode Kid first. Ansel Walters donated a gift of Chalcedony eggs glued on a paint can.

A dog on the February trip to Flourite Ridge found a rattlesnake. They will soon be out in numbers. Keep a close eye on your dogs that travel on field trips.

Wayne hopes to have another trip to Kilbourne Hole this spring. BLM maps are available in Las Cruces to the crater.

There will be a trip to Victorio Mtns. on March 3rd. Meet at club house at 8 a.m.

The Roundup field trips will be to Big Diggins, Baker Mine and Fluorite Ridge. There will also be a trip on Saturday to Rockhound State Park.

Membership: Some people have not renewed their dues.

Bulletin: The March Chips will be late because of the Rockhound Roundup

Shop: Joe reported we have no room for new equipment. We do have a vibrating lap machine for use during shop

hours, you must provide your own grit. He gave an explanation of the proper use of grinding wheels and trim saws. If you're still in doubt as to how to use them, see Joe or another seasoned member.

Shop hours will change after Roundup. Check the door for new hours. Joe is looking for sawyers and shop leaders for the summer. He will train you.

Roundup: Carolyn filled us in on all the particulars, and general overview of the daily events.

Claims & Historian: Not present

Librarian: The Library is open during meetings. List of available books is posted on the bulletin board.

New Business: *The following motions were passed:*

1. Dues will increase by \$2 a year beginning in July.
2. Age limit for children in shop—10 years with a height limit. They must be able to reach grinding wheels without use of a chair or stool.
3. \$.37 per mile stipend to Wayne Treers and Jim Foutch for trips sanctioned by the Board.

Refreshment Break

Drawings: Door prize of a Selenite rock specimen won by Linda Morgan-O'Connor; 50/50 won by Bill Sutton. Wearing your badge won by Mary Soule, a Diamond Willow walking stick and Bill Sutton won a bolo tie.

A BIG thank you to Daryl Johnson, Dellana Lindenmuth and Neal Pace for our refreshments.

Motion to adjourn the meeting by Maureen Scepka, seconded by Jim Foutch. Adjourned at 3:00 p.m.

Respectfully submitted,

Pam Morgan, Secretary

Deming Gem & Mineral Society—March Board Meeting Minutes – March 7, 2012

President Shelia Hoag called the meeting to order at 2pm. Officers present were VP, Marilyn Page; Secretary, Pam Morgan; Treasurer, Susan Shiffner; Round Up, Maurice Crawford; Bulletin, Carolyn Abbey; Director, Kevin Coleman; Director of kids activities, Jim Foutch; and Shop Foreman, Joe Morone.

Susan reported that the Club is still above the budget and the results will be posted on the bulletin board at the Club House.

There was a field trip to Victorio Mountains on March 3rd. The club's trip to Big Diggins for the workers of the show

will be on March 17th. Meet at the club house at 8 a.m.

Joe is working with Jesse from Black Hat to get saw blades. Kingsley usually back orders us and we have to buy in bulk. Joe is trying to get away from bulk buying, especially blades.

A thank you card was sent to David Moorehead for his contribution to the club.

The meeting was adjourned at 2:45 p.m.

Respectfully submitted,

Pam Morgan, Secretary



March Birthdays

Monika Anderson, Frank Anderson, Ernie Bent, Bud Daily, Ron Davis, John Della-Ratta, Al Hemke, Phillip Hollenshead, Lisa Jackson, Ron Kiely, Charlie Kukral, Don McDonald, Chris Moore, Kevin Nash, Lloyd Page, Maureen Scepka, Allen Wagner, Dan Welch, and Armand Zahn

March Anniversaries

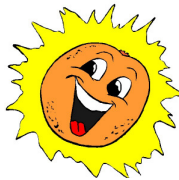
Regina & Robert Croteau, Ron & Mary Davis, Ric & Linda Morgan-O'Connor, and Joe & Tamalyn Wolford



Sunshine Greetings

A get well card was sent to Grace Bent.

Sympathy cards were sent to Frank Williams for the passing of his wife Julia, to the family of Martha Green, and Lyle Megli for the loss of a family member.



If you know of someone who could use a little sunshine greeting, please call Barbara at 544-8643

Welcome to
New Club Members  Welcome!

Robert Sahno – Bayard, NM
Mina Kingsley – Las Cruces, NM
Bert Binder – Helena, OH
John Knight - Albuquerque, NM

Refreshments

March refreshments will be provided by **Monika Anderson, Judy Crawford, and Elena Bost**



Our tummies Thank You

Rockhound State Park Happenings March, 2012

Submitted by Rocky Rockhound

Everything was in full swing for the Rockhound Roundup. I believe this was the first year in a long time that we hosted a field trip at the park. It was held on Saturday, March 10th, with Ranger Art Benavidez and DGMS member Jim Foutch leading. In spite of the weather we had several enthused participants.

The camping section of the park has been full all month with visitors coming for a few nights and then off they go to other places, (probably not as nice as our park, but then again I like it here.) Folks come here to camp because the sites are large, and it is quiet. You see birds and small animals, and even hear some animals yipping to each other at night. The sunset is beautiful with shimmering lights from Deming far into the night.

Our active Friends of Rockhound will be hosting the Desert Alive and Native Plant Sale on Saturday, April 14th from 8:00 A.M. to noon. There will be a native plant walk, and a bird walk. A wide selection of plants is priced from \$6.00 to \$16.00. Pre-sales orders will be taken at the extension office from 9-11AM on March 8, 15, and 22nd.

On Sunday, April 15th, from 1 to 5 PM, we will celebrate the New Mexico Centennial at the park. Come and join us for a delightful afternoon.

Rockhound State Park is open every day. The Visitor Center is open from 10:00A.M. to noon, and from 1:00P.M. to 4:00 P.M. Spring Canyon is open Wednesday through Sunday from 8:00A.M. to 3:30P.M. Our telephone number is (575)546-6182.

Shop Schedule

Monday 9 a.m.—noon and Monday 5—8 p.m.
Tuesday *CLOSED*
Wed. 9 a.m.—noon
Thursday *CLOSED*
Friday 9 a.m.—noon
Saturday 9 a.m.—noon

MAR. 2012

SANDERS GEMOLOGY LABS

For A Gemstone As Unique As *the Person Wearing It*

PAUL M. SANDERS

By Appointment Only

618-942-3448 - 618-559-8943

SandersGemLabs@Gmail.com

Web Site - geminique.com

Sapphires, Rubies, Emeralds
All Color Gemstone Cutting

Herrin, IL 62948

Shop stuff

EDITOR'S NOTE: *The source of these tips and hints are other club bulletins. Be careful when trying out any new idea. They have not all been tried by this editor.*

Test For Topaz

Topaz and quartz are not easy to separate by eye, and are sometimes impossible when the quartz is true topaz color. There is a big difference in price in the two and anyone describing quartz and topaz, however innocently, may well be in trouble.



Topaz is quite a different mineral, which is harder than quartz. Because of this, a drop of water will not spread on topaz, but will on quartz. Clean the stone with a cloth to remove all traces of grease. It must be dry before the test. Then place a small drop of water on it with a thin glass or metal rod. On stones with hardness of less than 7 on the Mohs Scale, the water is dispersed. On harder stones it will remain as a globule. The harder the stone, the more rounded will be the globule of water.
 Source: *The Coral Geode* – Nov. 2005

Never use Ammonia or detergent on turquoise. Ammonia will turn turquoise white. This is a good way to test for genuineness.
 Source: *Stolen Gems*—12/2011

Sugilite

is named after a Japanese geologist, Kenichi Sugi, who discovered the first specimens in Japan in 1944. It is a rare ore ranging in color from pink to purple and is mainly found in the Kalahari

Desert in the Republic of South Africa, with small deposits in Japan and Canada. It usually occurs in pegmatites of alkaline magmas and crystallizes in opaque masses. It occasionally occurs as small crystals or inclusions within quartz, and very rarely in a translucent gemmy form known as ‘gel’. It is frequently found in combination with manganese (black streaks) and sometimes with Richterite (blue). It has been called the “love” stone, and the stone for the “new age”, and is said to alleviate all types of physical and emotional discomfort and negativity.

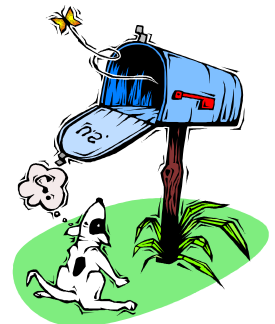
Source: *Golden Spike News*, 4/03

**DUES ARE NOW PAST DUE.
 THIS WILL BE YOUR LAST
 BULLETIN UNLESS YOU PAY BY
 THE END OF MARCH**

Change your mailing address or email address?

Please let us know!

Send the changes to
 DGMS Membership,
 P.O. Box 1459, Deming, NM 88031
 or email to: theDGMS@gmail.com



NOV.2011

STAGECOACH
 RV RANCH

Office **575-543-5119** Emergency **575-388-7949**
545 O'Kelley Rd. SE • Deming, NM 88030

APRIL 2011

Covington
 ENGINEERING
 Since 1848

DAN DROUAULT
 President

715 West Colton Ave. Toll Free: 877-793-6636
 Redlands, CA 92374 Fax: 909-793-7641
 dan@covington-engineering.com

APRIL 2011

EL RANCHO LOBO RV PARK
 Passport America/SKP Members

WALDON & ELLIE WOLF – OWNERS
 Park Hosts on staff 24/7

12235 Maricopa Rd. NE
 Deming, NM 88030

For reservations and Information: 575-544-4144

EMAIL – elrancholebo@zianet.com

MARCH 2012

J. Felipe Salazar D.D.S.
 DGMS Club Member

FAMILY DENTISTRY

PLAZA VICTOR SUITE #1 US: (575) 313-1081
 REVOLUCION AVE. PALOMAS, MEXICO

TURN RIGHT IMMEDIATELY AFTER CROSSING BORDER

THE DEMING GEM & MINERAL SOCIETY, INC.

P.O. BOX 1459, DEMING, N.M. 88031

FOUNDED - JANUARY 1965

DUES ARE DUE & PAYABLE ON DECEMBER 1st EACH YEAR

Membership Dues: \$10.00 per person for Adult Members

Junior Memberships: \$2.00 per person (up to 18 years of age)

All meetings are held at the Deming Gem & Mineral Society, Inc. building

4200 Raymond Reed Blvd., Deming, NM -- Clubhouse phone: 575- 546-2554

BOARD MEETINGS

2:00 p.m.

1st Wednesday each month

MEMBERSHIP MEETINGS

2:00 p.m.

4th Thursday of each month

Roundup Critique Meeting

Tues. March 13th

During after tear down lunch

Visitors are invited and welcome at membership meetings.

OFFICERS

President	Sheila Hoag	544-8841
Vice President	Marilyn Page	544-9019
Secretary	Pam Morgan	218-220-8452
Treasurer.....	Susan Schiffner	546-4591
Bulletin Editor.....	Carolyn Abbey	543-8916
Roundup Chair (*13) ...	Maurice Crawford	546-0056
Asst. Roundup Chairs .	Ron Ehrlich & Susan Schiffner	
Field Trips	Wayne Treers	575-528-8696
Historian.....	Zillah Karstetter .	575-694-0456
1 Yr. Director	Ron Ehrlich	544-0028
2 Yr. Director	Kevin Coleman.....	546-4078
Past President	Frank Barber.....	546-0212

CHAIRPERSONS

Claims		
Custodian	Members sign up for one month	
Librarian.....	Sandy Barber.....	546-0212
Membership	Elena Bost	546-9003
Parliamentarian		
Photographer	All Club Members	
Social Chairperson.	Monika Anderson.....	544-4655
Refreshments.....	All Club members	
Reporters.....	All Club Members	
Shop	Joe Morone	937-206-2111
Sunshine.....	Barbara Hamilton.....	544-8643
Webmistress.....	Sheila Hoag	544-8841

ROCKHOUND ROUNDUP

March 7 - 10, 2013



The **ROCK CHIPS**

is the official bulletin of the Society

The Society presents the Annual Gem & Mineral exhibition at the SWNM Fair toward the end of September. It is an official society function.

Email: the DGMS@gmail.com

OFFICIAL WEB SITE

www.dgms.bravehost.com



Rockhound Roundup . . . OFFICIAL SHOW OF THE SOCIETY

Held every year on the second weekend (Thursday through Sunday) in March at the SWNM State Fairgrounds.

THE DEMING GEM and MINERAL SOCIETY, INC. *an incorporated, non-profit organization shall be dedicated to the knowledge, advancement and enjoyment of the earth sciences and associated subjects. The Society's primary purpose is the dissemination and furtherance of knowledge of mineralogy, gem cutting and geology, and to stimulate interest in the development of these studies. It is composed of individuals who have chosen gems and the aforementioned studies as a major interest in their lives.*



**THIS WILL BE YOUR LAST
ROCK CHIPS BULLETIN
IF YOUR DUES ARE
NOT PAID**



SCHEDULE OF EVENTS

MARCH

Thursday, March 22nd General Meeting 2 p.m.

APRIL

Wednesday, April 4th Board Meeting 2 p.m.

Saturday, April 7th Field Trip Old Hachita (Grant County, NM) 8 a.m.

Sunday, April 8th EASTER

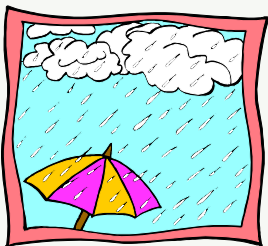
Thursday, April 26th..... General Meeting 2 p.m.

Deming Gem & Mineral Society

Carolyn Abbey, Editor

P.O. Box 1459

Deming, New Mexico 88031



Whoopee. . . Spring is coming

