

## Miz Prez 's message

Hi to our members and guests. Well the New Year is in its second month. February is a busy month and are we going to have 6 more weeks of winter? The Northeast is.

We are going to lose a teacher on beading by the 15th of this month. Kay Victor will be moving to Tularosa and she will be missed with her great ideas and happy attitude.

Maurice & Judy are very busy getting the last minute things done for the Roundup and we are reminding everyone that we need help. Information table is a sit down job, so if you can't get around then this is the job for you. If you can only work ONE hour then we still can use you. Please step forward and see me or Judy, or call one of the officers listed in the bulletin.

I am enjoying my job and hopefully I will learn alot of your names. I open the shop on Mondays and would love to see some new faces. Come on down and see your club at work.

Hope to see you at the General meeting on the 28th of Feb. and many of you at the Show.

*Marilyn*



## Upcoming Field Trip

On Saturday, Feb 16th we will meet at the club house 8am, and leave at 8:30 sharp. We will be heading to Columbus to look for Honey Onyx. Bring plenty of water, lunch or snacks. I would highly suggest that you bring gloves and safety glasses along with you .

*Frank*

## Upcoming Classes

February 16th, Shirley Krasinski will teach a beaded necklace with a safety clasp. Bring your beads (any kind) There will be a \$2 fee to cover the cost of the other supplies.

Also, from 10 to noon please come and help assemble bracelets for the Roundup spinning wheel. All supplies will be furnished.

*(CLASSES Continued on page 3)*

## Our February 28th Meeting

We have invited the Deming High School Cheerleaders for an Ice Cream Social.

Please come and meet them and bring some goodies to go with the ice cream.

*They were unable to come in January.*



## Roundup... It's just around the corner

We would like to thank all of those who attended the February 9<sup>th</sup> Roundup meeting. Your support is greatly appreciated, and needed, in order to make our 48<sup>th</sup> Roundup a success!

We accomplished a great deal. We still have a few chairs to fill, most of the work is done, but we need someone to head them up to make sure everything is done. The T-shirts and hats have arrived and we will have them at the Feb 28<sup>th</sup> meeting for those who would like to buy them before the show (at a discounted price).

We still need people to take a silent auction table. This requires donating 20 rock related items and labeling them. If you would like to help with this and you don't have enough to fill a whole table by yourself, you can share a table with someone. Please let Judy know.

We still need people for the Information areas (Bldg. 1 and Bldg. 2). This is an easy sit-down job selling raffle tickets and giving out tickets for our hourly drawings.

Need some Cashiers for geode cutting and more sawyers; silent auction set up and helpers; someone to learn the jobs for live auction in take and logging of donated items; also for field trip trailer for upcoming years; someone to learn claims with us for future; someone to work with Joe Morone for learning the Big Diggins excavation and set up; Dave Hoggatt needs a few more field trip leaders and tail gaters for the field trips; Need 3 donation solicitors for items for hourly drawings; gate duty for Wednesday; someone to run errands for on grounds and off grounds; anyone to learn and help with the outside and inside dealer chairpersons to help out.

And we're sure there are more areas that need someone to help.

It is coming together, but we still need you. Please come to the Roundup meeting on Feb. 23 and let us know any area you can help out in. This is the last meeting before the set-up begins.

*Maurice & Judy*

NOTICE: We will again this year have the free "children's with family" field trip, to Rockhound State Park, on Sat. March 9th at 9:00 a.m. Sign ups will be at field trip trailer.

## Shop Notes

We need 500 lbs of stones for the tumblers. Roundup uses 700 lbs per year. When you are out on a field trip or cleaning up your yard save some for us. 1lb fills 2 1/2 grab bags.

*Joe*

## Rockhound Roundup



**2013 Dues are Past Due – Renew Now!**

# THE DEMING GEM & MINERAL SOCIETY, INC.

P.O. BOX 1459, DEMING, N.M. 88031

FOUNDED - JANUARY 1965

## DUES ARE DUE & PAYABLE ON DECEMBER 1st EACH YEAR

Membership Dues: \$12.00 per person for Adult Members  
Junior Memberships: \$2.00 per person (up to 18 years of age)

**All meetings are held at the Deming Gem & Mineral Society, Inc. building**

**4200 Raymond Reed Blvd., Deming, NM -- Clubhouse phone: 575- 546-2554**

### BOARD MEETINGS

2:00 p.m.

1st Wednesday each month

### MEMBERSHIP MEETINGS

2:00 p.m.

4th Thursday of each month

### NEXT ROUNDUP MEETING

10:00 a.m.

Saturday, February 23rd

*Visitors are invited and welcome at membership meetings.*

### OFFICERS

President.....	Marilyn Page .....	544-9019
Vice President.....	Shirley Krasinski .....	544-1315
Secretary .....	Jerry Abbey .....	543-8915
Treasurer .....	Georgia Hoggatt ...	309-678-7342
Bulletin Editor.....	Carolyn Abbey .....	543-8916
Roundup Chair ('13)...	Maurice Crawford .....	546-0056
Asst. Rnd.Up Chair ...	Keith Meherg .....	575-694-5747
1 Yr. Director.....	Frank Barber.....	546-0212
2 Yr. Director.....	George Laudermilk	520-403-1878
Past President.....	Frank Barber.....	546-0212
Pro Tem .....	Art Krasinski.....	575-494-5971

### CHAIRPERSONS

Field Trip Chairs .....	Frank Barber .....	546-0212
	Joe Bost .....	546-9003
Shop .....	Joe Morone .....	937-206-2111
Claims.....	Maurice Crawford .....	546-0056
Librarian.....	Sandy Barber.....	546-0212
Membership.....	Elena Bost .....	546-9003
Parliamentarian .....	.....	.....
Photographer.....	All Club Members	
Sunshine.....	Barbara Hamilton.....	544-8643
Historian .....	.....	.....
Social Chairperson .	.....	.....
Refreshments .....	All Club members	
Reporters.....	All Club Members	
Custodian .....	All Club Members	
Webmistress .....	Gaylene Foutch .....	546-5716

## ROCKHOUND ROUNDUP

March 7 - 10, 2013



## ...OFFICIAL SHOW OF THE SOCIETY

Held every year on the second weekend (Thursday through Sunday) in  
March at the SW New Mexico State Fairgrounds.

The Society presents the Annual Gem & Mineral exhibition  
at the SWNM Fair toward the end of September.  
It is an official society function.

**“ROCK CHIPS” is the official bulletin of the Society**

**Email: the DGMS@gmail.com**

**OFFICIAL WEB SITE [www.dgms.bravehost.com](http://www.dgms.bravehost.com)**

THE DEMING GEM and MINERAL SOCIETY, INC. *an incorporated, non-profit organization shall be dedicated to the knowledge, advancement and enjoyment of the earth sciences and associated subjects. The Society's primary purpose is the dissemination and furtherance of knowledge of mineralogy, gem cutting and geology, and to stimulate interest in the development of these studies. It is composed of individuals who have chosen gems and the aforementioned studies as a major interest in their lives.*

## February Birthdays:

Frank Barber, Merle Burton, Jim Enos, Charles Grimes, Madelyn Harris, Priscella Lingenfelter, Flo Lovell, Sabine Lyons, Marilyn Page, Larry Randa, Chet Schilling, and Willy Shelton



## Rockhound State Park Happenings February, 2013

Submitted by Rocky Rockhound

As I am writing this article, the wind is howling with gusts up to 50 miles per hour, and it is really, really cold out. Just a few days ago we were in the 60's. Let's hope this is the one last blast of winter.

The campground has been full. We have our usual winter visitors, and those who are passing through on their way to warmer places. We also have had several Ibex hunters camp here. You cannot hunt in the State Park, but they can hunt further south in the Florida Mountains. There will be another Ibex hunt from Feb. 21<sup>st</sup> to March 31<sup>st</sup> to thin the herd to provide a sustainable food supply for them.

Again this year, one of the field trips during the Rockhound Roundup will be to Rockhound State Park. *The date will be Sat. March 9th. Meet at the Roundup Field Trip trailer at 8:30 a.m.*

The Friends of Rockhound will be celebrating their 9<sup>th</sup> year in operation this month. There will be no speaker for their monthly meeting. Instead, the group will be reviewing the past year, and making plans for projects for the coming year. We appreciate all that they do for the park. Meetings are held the last Wednesday of each month.

Rockhound State Park is open all year long. The Visitor Center is open from 10-noon, and from 1-4 p.m. Our telephone number is 575-546-6182 for any questions you may have about the park.

### Upcoming Classes *continued from page 1*

There will be two separate wirewrapping classes. One on March 2nd and one on March 23rd.

On March 30th Judy will be teaching us how to make an arrow bracelet.

Beginning March 1st there will be a \$1.00 charge to each person attending each class. This will help us pay the cost of the heating and AC costs.

*Shirley*



## Happy Anniversaries to

Leon & Gloria Chanco, Madelyn & Robert Harris, Keith & Paula Mehberg, Lloyd & Marilyn Page, Roger & Lynn Schaap, and Sergio & Laura Schwartz.



## Welcome Club Members

Marion & Sharee Johnson  
Johnny French, Sandi Randa,  
Diana Freshwater, Jennie Carroll,  
Wayne & Marilyn Gentry,  
and Cipriano & Frances Chavez



## Sunshine Greetings

A thinking of you card was sent to Robert Schiffner, A sympathy card was sent to the George Gollihar family for the loss of their father.

A thinking of you card was sent to Al & Flo Lovell. If you know someone who needs a little sunshine call Barbara at 544-8643.

The Knights of Columbus will be starting up the annual Lenten Fish Fry February 15th. It will continue every Friday up to and including Good Friday March 29th.

The place: Holy Family Hall, 615 S. Copper  
4 pm to 7 pm. Cost \$7.00 per person.

Includes fish, choice of potatoes (baked or french fries) Coleslaw, biscuit and butter, coffee or ice tea.

This is open to everyone and carryout is available.



## DUES

There was a club member named Hughes who waited too long to pay dues, She was struck off the roster, Did not realize it cost 'er the workshop, club field trips and news.

**DUES ARE PAST DUE**

### Shop Schedule

**Monday, Friday & Saturday 9 a.m.—noon**  
**Wednesday, Noon until 3p.m.**  
**CLOSED Tuesday and Thursday**

### Claims

One to two people are needed to work with us this year to handle claims paperwork for the next year.  
See Maury or call him at 575-546-0056

**Library Books** and other materials checked out of the Club Library are to be returned in four (4) weeks. If you need extra time, please see me and I will extend your time. Otherwise, please return them when due. Thank You, *Sandy Barber*

Deming Gem & Mineral Society
Board Meeting Minutes – February 6, 2013

The meeting was called to order at 2:05 p.m. by President, Marilyn Page who then led the Pledge of Allegiance.

Board Members present: Maurice Crawford, George Laudermilk, Frank Barber, Marilyn Page, Carolyn Abbey and Jerry Abbey.

Club members present were: Joe Morone, Lyle Megli, Judy Crawford, and Ernie Bent.

Secretary' report: None

Treasurer's report: Still messing with the books .

President's report: The HS Cheerleaders that were unable to attend the January meeting will be at our February 28th meeting. We will have an ice cream social. Please come and meet them and bring goodies to go with the ice cream.

Field Trip: Frank said the Field trip to Columbus for Honey Onyx is still on for February 16th. Be here at 8 a.m. and leave at 8:30 a.m. Safety glasses and long sleeves are recommended, and a sledge hammer if you want.

Claims: Insurance company will FAX the proof of Liability for BLM. Digging for the pit at Big Diggings is scheduled.

Shop: Everything is normal. Some equipment down and most of

it is up.

Bulletin: All items to Carolyn by Feb 6th for the Feb. issue.

It was stressed that Membership dues and all club correspondence should be addressed to DGMS at P.O. 1459, Deming, NM 88031.

Roundup: Next meeting is Saturday, Feb. 9th. Still lots of positions to fill. The final meeting before Roundup will be on February 23rd at 10 a.m. Please be there and let us know where you can help out.

Demos scheduled for Roundup are sphere making and cabochon making.

The Family trip to Rockhound State Park is on for Saturday March 9th. Meet at the field trip trailer at 8:30 (will leave at 9)

Due to the Roundup, the March Board meeting will be held on February 28th at noon (prior to the general meeting).

No other business being brought before the Board, we adjourned at 3:20 p.m.

Respectfully submitted by
Jerry Abbey, Secretary



SCHEDULE OF EVENTS

FEBRUARY

Table listing February events: Saturday, February 9th Roundup Meeting 10 a.m.; Thursday, February 14th Valentines Day; Saturday, February 16th Class: Safety clasp necklace 9 a.m.; Saturday, February 23rd Roundup Meeting (last one before show) 10 a.m.; Thursday, February 28th March's Board Meeting (prior to Gen. meeting) Noon; Thursday, February 28th General Meeting 2 p.m.

MARCH

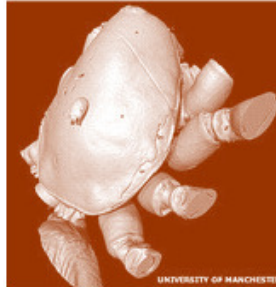
Table listing March events: Monday, March 4th Set up Roundup (Need lots of help) 8 a.m.; Tuesday, March 5th Finish Roundup Set up 8 a.m.; Wednesday, March 6th Dealers Arrive to Set up 9 a.m.; Thursday-Sunday, March 7-10th 48th Annual Rockhound Roundup 9-5 p.m.; Tuesday, March 12th Tear Down Show and take down signs 8 a.m.; Saturday, March 16th Big Diggings Roundup workers Field Trip 8 a.m.; Thursday, March 28th General Meeting 2 p.m.

All meetings are held at the Clubhouse (4200 Raymond Reed Blvd.) unless otherwise noted.
Visitors and guests are welcome at membership meetings.

## Smallest Fossil

Scanned By University Of Manchester.

An X-ray scan of Baltic Amber at the University of Manchester has revealed what scientists have said is the "smallest arthropod fossil ever". The 50 million-year-old mite, which was found on a fossilized spider, is just 170 millionths of a meter long.

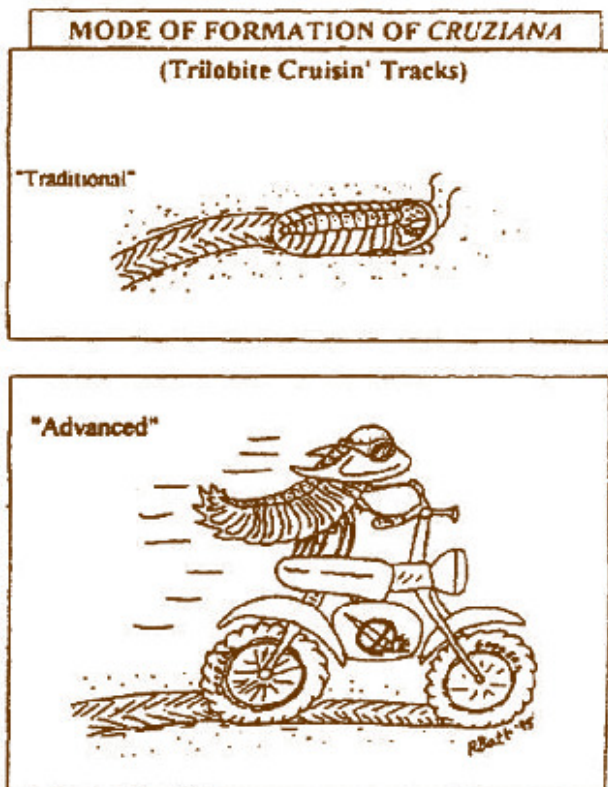


The find, published in the Royal Society's Biology Letters, was made using computed tomography (CT) which builds up a 3-D image from flat images. Biologist Dr. David Penney said the fossil was "extremely rare". Baltic amber, the fossilized resin of trees from the area around the Baltic Sea, can contain fossilized arthropods - insects, arachnids and crustaceans - within it, which Dr. Penney said were "preserved with lifelike fidelity".

The size of the mite means is barely visible without a microscope, and Dr. Penney said the team at the university's Faculty of Life Sciences would not have been able to identify it without the CT scan. "CT allowed us to digitally dissect the mite off the spider in order to reveal the important features on the underside required for identification," he said. "The specimen, which is extremely rare in the fossil record, is potentially the oldest record of the living family Histiostomatidae. Most amber fossils consist of individual insects or several insects together, but without unequivocal demonstrable evidence of direct interaction.

The remarkable specimen we describe in this paper is the kind of find that occurs only once in, say, a hundred thousand specimens."

Source: Golden Spike News, Jan 2012



Cartoon from MAPS DIGEST 2/97 via T-Town Rockhound 7/97

## ROUNDUP BRIEFING

For the benefit of our newer members, here is a brief description of what goes on and what it takes to put our show on each year.

We start setting up on Monday (this year it's the 4th) about 8 a.m. Tables, display cases, equipment, and other supplies, must be moved from storage and set up. The buildings need to be swept out and the outside and inside vendor spaces marked.

Tuesday (the 5th) we will finish whatever still need doing.

On both days coffee and donuts are provided for the morning break, around 10:00 a.m. Lunch is on your own. It's important that you sign the worker's sheet (at the stage) so you get credit for your help.

This year, Jerry Abbey will again ramrod the general set up crew. Art Krasinski and Carolyn Abbey are in charge of the dealer spaces. The more help we have, the easier and quicker the job gets done. There are tasks for everyone; some that can be done while sitting and not involving manual labor, and even running errands (cuz we always forget to bring something).

Wednesday is the day the dealers arrive and start setting up their booths.

**Thursday through Sunday is Show Time!** Many tasks need your help during the show: Membership/information table, spinning wheel, geode cutting, bucket brigade (to pick up auction donations from the dealers), helping with silent and live auctions, and many other things that may come up.

The Roundup ends Sunday at 5 p.m. and the dealers pack up and depart. Monday, following the show we take a day of rest and catch up at home. On Tuesday, starting about 8 a.m., we tear it all down and put everything away ready to go again next year.

The Rockhound Roundup is the Club's main source of income and the reason we have our club house. It takes contributions of time and effort from ALL club members to make it work. So mark your calendars, plan your schedules, bring your gloves, and come on out.

## On the Lighter Side . . .

Three animals are outstanding examples of the Beast of Burden class: the mule, the camel, and the simple-minded rockhound. The mule is smart - put one pound more than his usual load on him, and he simply balks until it is removed. The camel is even more decided in his ideas - try overloading him and he'll stay in the sand, and if you persist, will spit his cud at you. But that simple-minded rockhound? He takes 15 to 20 pounds of equipment in with him, then tries to load on about 50 to 60 pounds of rock and carry it back to the car on the road. Does this sound familiar to anyone?

Source: The Rockhound Record - April 2011

*Don't sweat the petty things  
and don't pet the sweaty things.*

*If man evolved from monkeys and apes, why do  
we still have monkeys and apes?*

## DGMS, Inc. – General Meeting – January 24, 2013

The meeting was called to order at 2:05 p.m. by President Marilyn Page who then led the Pledge of Allegiance.

New members present were Sandi Randa, Beth Metcalf, and Bobbi Megli, and a guest present was Sue Borden Kircher.

The minutes were approved as published in the Chips bulletin

Secretary's report: A letter was read from Bill Wellons to the NM Magazizne. Dave Hoggatt donated a projector to the Club and Marilyn DeMott donated over 30 flats of mineral specimens. Thank yous to the both of you.

Treasurer's report: Marilyn stated that the books are still a work in progress.

President's report: Does anyone know the whereabouts of the Club's digital and video cameras? Please contact Marilyn with information.

Field Trips: Saturday February 16th meet at the clubhouse at 8 a.m. and leave at 8:30. We're going to the Columbus area for Honey Onyx and whatever else we can find.

Shop: Inventory has been completed. One saw and two grinders are temporarily down. Back in action soon.

We need more rough rock for the tumblers. Please pick up a few extra when you're on field trips.

We're planning a trial silent auction during the daytime at the Roundup. Members are encouraged to bring items for sale. We will try giving 80% of the sale proceeds to the member and 20% to the club.

Library: Items checked out are for one month only. Please return any books that you have had more than one month or see Sandy to extend the time.

Sunshine: Card sent to the family of George Gollihar for his passing. A thinking of you card was sent to Al & Flo Lovell.

Bulletin: Carolyn stated that it will be out weekend after the Board meeting. We will need stamps.

Membership: Nothing to report.

Roundup: We still need many volunteers to fill the openings. Thank you to Lyle Megli, Assistant Roundup volunteer.

We need magazines, Wally bags, etc. for the Membership table. There are still five silent auction tables that need someone to fill. Please dig into your rockpile and help fill one or part of one.

There will be a free field trip Saturday to Rockhound State Park for children with their parents.

Need someone to work with the Field Trip trailer as this will be Doris and Barbara's last year taking care of it. We will need a gate person on Wednesday the 6th. People to sell Raffle tickets Feb. 22 and March 2nd 10 a.m. til 2 p.m. at Walmart, BiMart and Peppers. And we still need an assistant to supervise the digging at Big Diggins (club claim).

Roundup dates—Setup March 4 & 5 at 8 a.m. Dealers arrive on March 6th. Show time March 7 thru 10th. March 11th day of Rest and 8 a.m. on Tuesday March 12th we tear down the show and put it all back. There will be a luncheon, when we're through cleaning up, at the club house followed by a Roundup Critique.

Break time!

Old Business: None

New Business: Shirley needs help with her class on Feb. 16th. She will be putting up a display at First Savings Bank on the Monday the 4th.

Art, Shirley and Joe assembled 875 grab bags for the spinning wheel. On Feb. 2nd Kay Victor will teach Valentine ear rings.

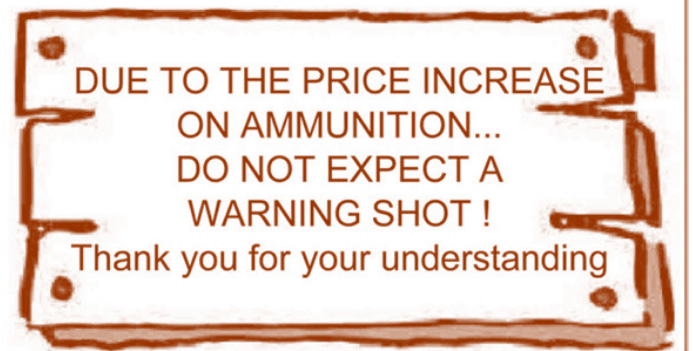
The 50/50 was won by Sandi Barber; the badge door prize of a bolo was won by Kay Green; the other door prize, of a mineral specimen, was won by Carolyn Abbey.

Meeting was adjourned at 3:26 p.m.

Respectfully submitted by

Jerry Abbey, Secretary

### New Sign For Your front Door



### Specializing in Apache Dendritic Rhyolite **Red Roof Rock Shop**



**Dona Ana & Columbus Hwy.  
Bill Geneva**

**(575) 546-0348**

**P.O. Box 1535, Deming, NM 88031**

MAR.2012



*J. Felipe Salazar D.D.S.*

DGMS Club Member

**FAMILY DENTISTRY**

PLAZA VICTOR SUITE #1  
REVOLUCION AVE.

US: (575) 313-1081  
PALOMAS, MEXICO

TURN RIGHT IMMEDIATELY AFTER CROSSING BORDER

MARCH 2012

## Synthetic or Natural Gemstones?

### Some Definitions

Synthetic gemstones have the same properties as natural gems, but they are created in a laboratory. Lab gems are becoming more common and more popular throughout the jewelry industry. It's important to educate yourself about synthetic gemstones so that you understand what you are buying when you purchase jewelry.

### What Are Natural Gemstones?

Natural gemstones are delivered to us courtesy of nature, with no interference from humans. By the time they appear in our jewelry, they've been cut or polished, but they've not been treated or altered in other ways.

### What Are Genuine Gemstones?

A genuine gemstone is the real thing, but isn't natural anymore if it was treated in some way to enhance its appearance. A large percentage of gemstones are treated to enhance their appearance.

The enhancements allow jewelry manufacturers to improve the look of stones that consumers wouldn't otherwise purchase. Treated gemstones are genuine, but they are not longer considered natural. If naturally "perfect" stones were the only ones available, most of us couldn't afford them.

### What are Synthetic Gemstones?

*Synthetic* and *Simulant* are terminology used by the USBM for laboratory grown gemstones. Others in the gemstone industry may use different terms to refer to laboratory grown gemstones. Laboratory grown "synthetic" gemstones have essentially the same appearance and optical, physical, and chemical properties as the natural material that they represent. Laboratory grown "Simulant" gemstones have an appearance similar to that of a natural gemstone but have different optical, physical, and chemical properties. Additionally, certain colors of "synthetic" sapphire and spinel, used to represent other gemstones, would be classed as "Simulants". Colored and colorless varieties of cubic zirconium are the major "Simulants" produced.

### LAB CREATED AND LAB GROWN AND SYNTHETIC ARE SYNONYMOUS TERMS.

To use any of these terms, according to the FTC, the gemstone must be identical to the natural in every way. Composition, Hardness, and Optically.

There are a lot of sellers on the internet who try and denote a difference in these terms, but according to the FTC they are identical terms. The Federal Trade Commission is very clear on the use of the term Lab or Laboratory Created. The stone must be identical to the natural in every way. Here's the quote from the FTC guidelines for gemstone sales for your reference.

**"(c) It is unfair or deceptive to use the word "Laboratory-grown", "laboratory-created", "manufacturer name}-created", or "synthetic" with the name of any natural stone to describe any industry product unless such industry product has essentially the same optical, physical, and chemical properties as the stone named."**

*Source: Golden Spike News—Jan. 2013*

## Shop stuff

**EDITOR'S NOTE:** *The source of these tips and hints are other club bulletins. Be careful when trying out any new idea. They have not all been tried by this editor.*

### Heat Treating Rocks

You have just cut a slab from some agate rough and are disappointed with the color. The overall color is a washed out white. At this point, most rockhounds would toss both the slab and the rough into their spouse's rock garden and write off the investment in the piece.

There may be life yet in that nondescript piece of rough. Before consigning it to the rock garden, try heat treating petrified wood, agate, jasper, and many other types of rocks. Almost any rock can benefit from the process. A recent example was a piece of dull brown agate. After heat treating, it became a deep red.

How, you ask does one go about heat treating a piece of rock? The process is fairly simple, but is a trial and error process. The slab should be immersed in a small pan of sand and placed in a range oven (NOT in a microwave). Turn the temperature to warm, about 200° for about one hour to expel any moisture trapped in the stone. Then raise the temperature 25° every half hour until the temperature is up to 350°. Leave it at this setting for two hours. Turn off the oven and allow the rock to come to room temperature without opening the door.

Now you can check the results. If you are satisfied, you can slab the rough and heat treat the lot. If not, return the slab to the oven and repeat the process. You can skip the time at 200° since all the moisture has already been baked out by now. Raise the temp. to 400° this time. Continue raising the temp. by 50° until the results you want are reached. Most ovens will go up to 500°. If you need to go higher, some special oven will be required.

*Source: Gems of the Rogue—March 2012*

### My Rockhound Valentine

I love your hair of citrine hue,  
I love your eyes of sapphire blue.  
Your ivory teeth are pearly white,  
And I love your ruby lips so bright.  
Your jade-smooth skin so soft and sleek,  
A blush of rose quartz on your cheek,  
Placed there from Cupid's palette board,  
Makes you a prize to be adored.  
You are a gem and you're all mine,  
You are my  
Rockhound Valentine.

Original source unknown,  
via Gems of the  
Rogue 2/07

48th Annual  
**ROCKHOUND  
ROUNDUP**



**ALMOST HERE**

***Coming Soon!***

**March 7th**

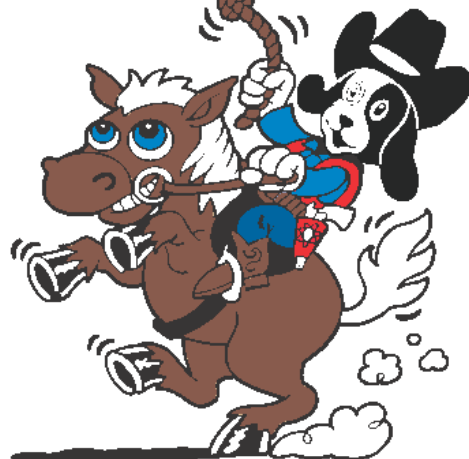
**Thru**

**March 10th**

**SWNM State Fairgrounds  
in Deming, NM**

**Don't Miss It!**

**DEMING  
ROCKHOUND  
ROUNDUP**



**DEMING GEM & MINERAL SOCIETY**